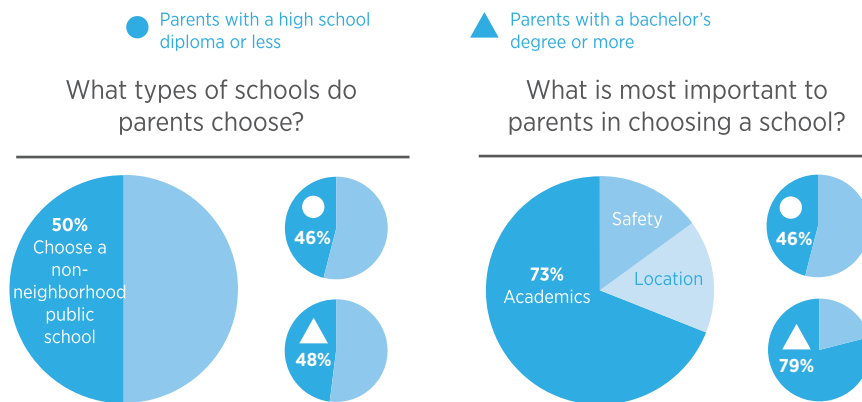


# CLEVELAND

**What is it like for parents to choose a public school in cities that provide multiple options?** According to a survey of 4,000 public school parents in eight “high-choice” cities, including Cleveland, parents’ experiences vary widely. Cleveland was one of three cities where parents with a high school diploma or less were as likely to choose a non-neighborhood-based public school for their child as parents with a bachelor’s degree or more. Cleveland parents were more likely to report that the available schools provided a good fit for their child. Even so, Cleveland was second to the bottom on the percent of parents who reported that their city’s schools were getting better, and just 47% of parents reported that they had another good school option besides their current school. Compared to other cities, more parents in Cleveland reported transportation as a barrier to choosing a school. For the full report comparing all eight cities, visit [crpe.org](http://crpe.org).

## HOW PARENTS CHOOSE A SCHOOL

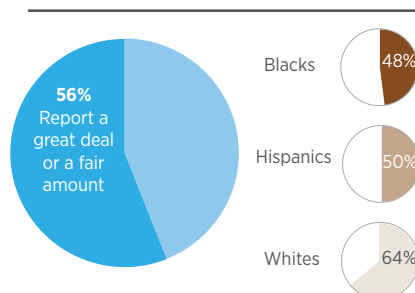


## HOW PARENTS PERCEIVE THEIR OPTIONS

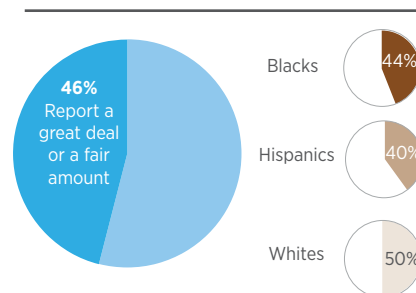


## PARENTS' TRUST AND CONFIDENCE IN CITY LEADERS

How much trust and confidence do parents have in the school system to make sure all neighborhoods have great schools?



How much trust and confidence do parents have in city leaders to address public problems?



# CLEVELAND

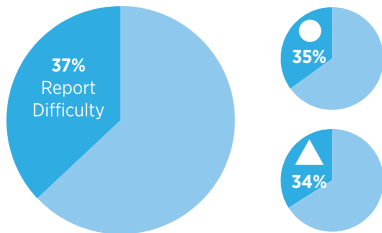
## COMMON BARRIERS TO CHOOSING A SCHOOL

● Parents with a high school diploma or less

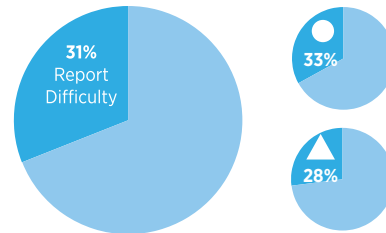
▲ Parents with a bachelor's degree or more



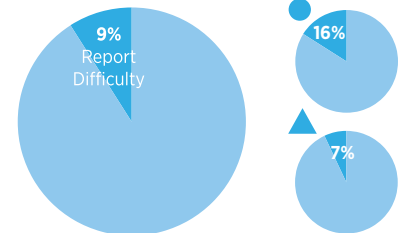
Available schools weren't a good fit



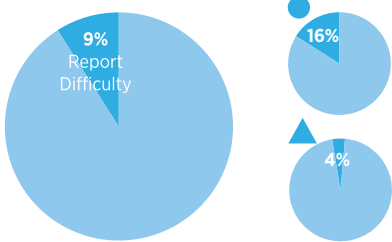
Understanding which schools their child was eligible to attend



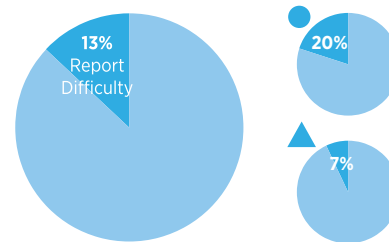
Difficult or confusing paperwork



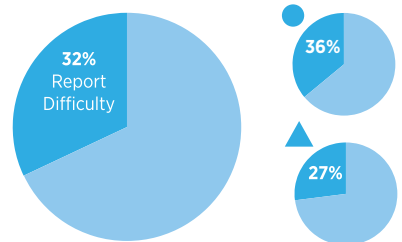
Number of applications



Different application deadlines



Finding transportation for their child to and from school



## HOW PARENTS BECOME INFORMED ABOUT THEIR OPTIONS

Parents use on average

**3** information sources



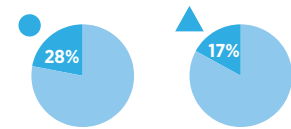
**52%**

of parents say **visiting the school** is the most useful information source



**22%**

Unable to get information needed to choose



## HOW PARENTS GET THEIR CHILD TO SCHOOL

**51%**



of parents report driving their child to and from school

**TRIP TIME (EACH WAY) FOR CHILDREN IN NON-NEIGHBORHOOD PUBLIC SCHOOLS**

**00:17:00**

Children in non-neighborhood public schools traveled longer (6 minutes longer than those in neighborhood public schools).