

# School Enrollment Shifts in Washington State during COVID-19

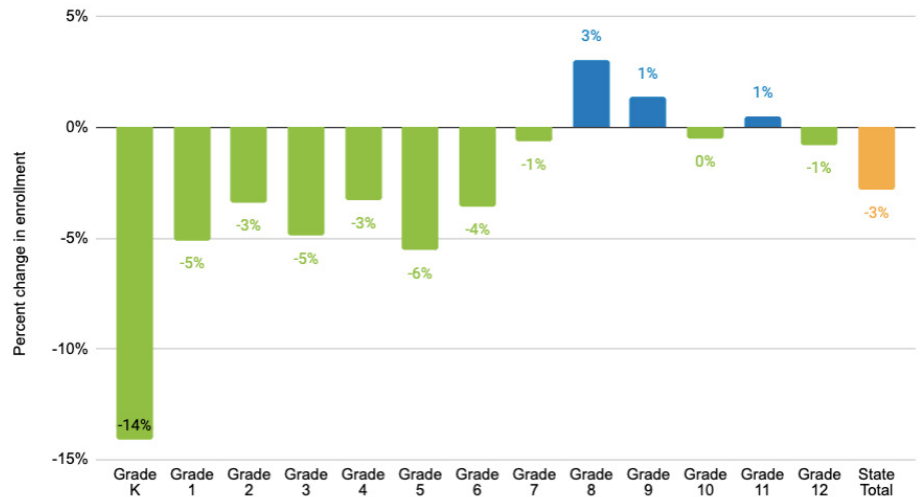
## Statewide enrollment dropped 3 percent in 2020 compared to prepandemic enrollment.

This translates to a **decline of 5,238 students**. The largest loss was in kindergarten, but losses ranged from 3-6 percent across other elementary grade levels.

Source: "Preliminary Enrollment Numbers Show Families Delaying Kindergarten Start; More Alternative Learning," OSPI New Release, October 7, 2020

Note: Data presented in this chart include all district and charter schools in the state.

WA State student enrollment change September 2019 & 2020

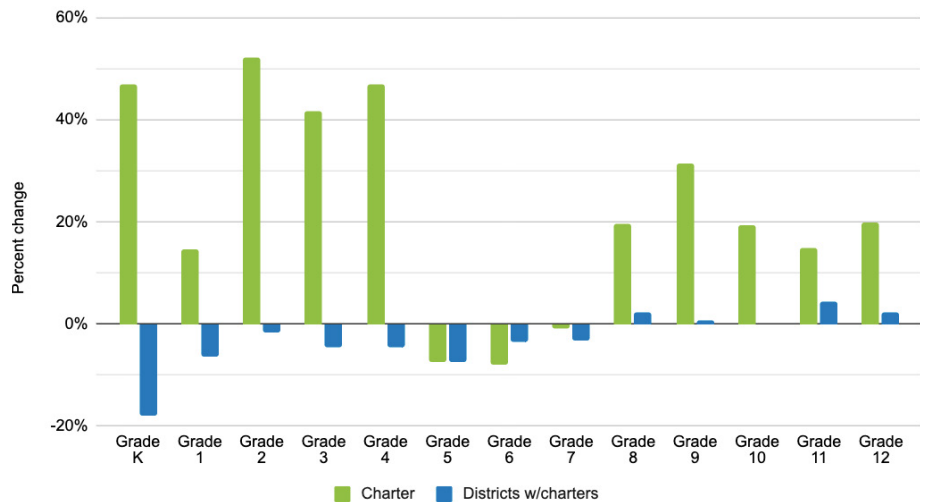


## Charter school enrollment jumped in 2020, while districts saw losses.

Across the nine charter schools in our sample, **enrollment increased by 35 percent from March 2020 to September 2020**, compared to a loss of 3 percent in local districts. It's important to note that these nine charter schools—even after a 35 percent increase in enrollment—only account for about 3,600 students, or just over 1 percent of the entire state's enrollment.

The six districts where charter schools are located experienced enrollment declines in the elementary grades, similar to trends statewide. In contrast, **the nine charter schools in our sample increased enrollment in grades K-4 and 8-12.**

Enrollment change from March 2020 to Fall 2020



Source: 1251H Headcount, OSPI Apportionment Documents, March 2020 to September 2020 for charter schools in existence since 2018 and the school districts in which they are located.

Note: Fall enrollment was calculated as the average enrollment for the months of September, October, and November. Charter school students are not included in district enrollment totals.

For this analysis, CRPE used statewide enrollment trends reported by OSPI in October 2020 and statewide headcount data from OSPI. We exclude charter schools and grade spans that opened in September 2020 from our analysis. We also compare charter school enrollments to those in their local school districts as the best comparison available.

# School Enrollment Shifts in Washington State during COVID-19

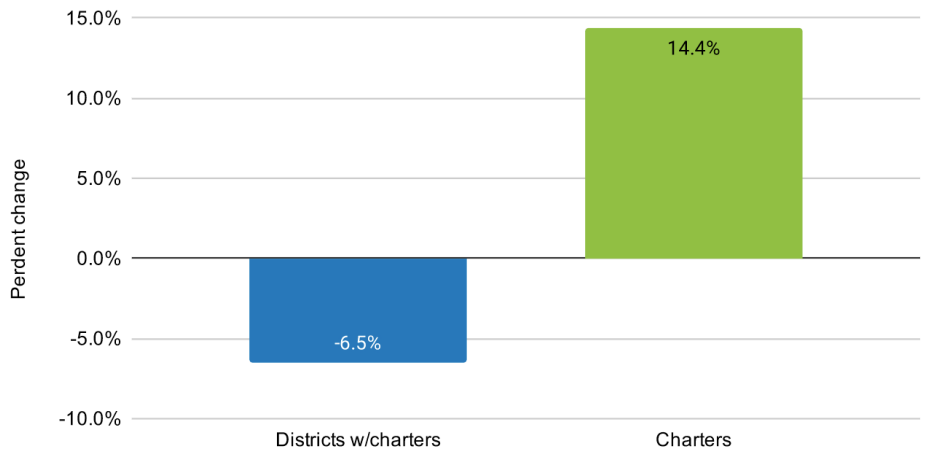
## Special education enrollment in charter schools grew more than 14 percent.

For districts with local charter schools, enrollment for students with disabilities declined by 7 percent from March to September 2020. Meanwhile, **charter schools increased their share of students with disabilities** by just under 15 percent.

Sources: 1735T Special Education, OSPI Apportionment Documents, March 2020 to November 2020 for all charter schools and their associated district LEAs. "Preliminary Enrollment Numbers Show Families Delaying Kindergarten Start; More Alternative Learning," *OSPI New Release*, October 7, 2020.

Note: Fall enrollment was calculated for charters and districts with charters as the average enrollment for the months of September, October, and November. Charter school students are not included in district enrollment totals.

Percent change in special education enrollment from March 2020 to Fall 2020



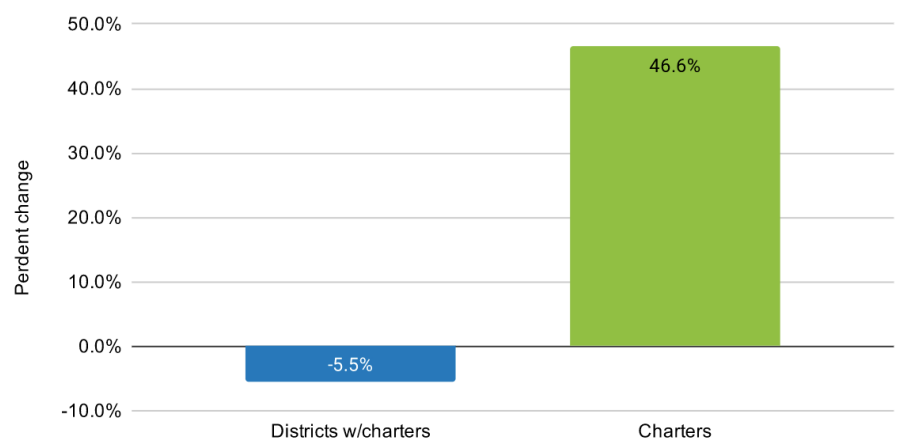
## English language learners enrollment fell over 5 percent in districts, but charter schools saw an almost 50 percent increase.

In district schools with local charters, enrollment of students receiving transitional bilingual services<sup>1</sup> declined between March 2020 and September 2020. Charter schools, by contrast, **saw a 46 percent increase**.

Sources: 1251H Headcount, OSPI Apportionment Documents, March 2020 to September 2020 for all charter school and their associated district LEAs. "Preliminary Enrollment Numbers Show Families Delaying Kindergarten Start; More Alternative Learning," *OSPI New Release*, October 7, 2020.

Note: Fall enrollment was calculated for charters and districts with charters as the average enrollment for the months of September, October, and November. Charter school students are not included in district enrollment totals.

Percent change in Transitional Bilingual Instructional Program enrollment from March 2020 to Fall 2020



<sup>1</sup> Students in the state's Transitional Bilingual Instructional Program (TBIP) receive specialized instruction to aid in their acquisition of English and/or maintenance of the student's native language.